

DEPUTY LAID TO REST

Montrose officers part of farewell for Geer.
Page A4



FIELDS SWIMS
STRONG AT STATE.
Page A11



Road closed

Contractors working for the City of Montrose closed Woodgate Road between the Ogden Road roundabout and Oxbow Drive Monday as part of the Woodgate Road construction project. Access for local delivery traffic to the east side of Wal-Mart and to the recreation center construction site will remain open during the road closure. The closure is expected to last through the end of the construction project mid- to-late summer 2016. (Paul Wahl/Montrose Daily Press)

Challenger aims to unseat Tipton

By KATHARHYN HEIDELBERG
DAILY PRESS SENIOR WRITER

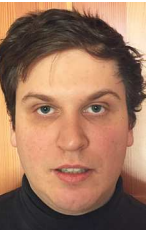
A Carbondale man looks to challenge U.S. Rep. Scott Tipton for his seat this year.

"A lot of people are hungry for new, young blood and energy," Alex Beinstein said Monday. "I bring a real understanding of the Constitution to the table."

Beinstein, 27, a 2010 history graduate of the University of Chicago and graduate of the University of Main School of Law, was studying for the bar when he heard a different call.

"I had a change of heart. The more I studied about Tipton's record, the more I thought he deserved a challenge," said Beinstein, whose background includes television journalism and interviews with high-ranking figures, such as Madeleine Albright, Susan Rice and John Bolton.

Tipton is part of the status quo in D.C., Beinstein opined, criticizing the congressman's votes that allowed the president to fast-track the Trans-Pacific Partnership, and the Every Student Succeeds



Beinstein

See AIMS page 3

WOULD YOU SURVIVE A PANDEMIC?

Your future would depend on taking action before it strikes

By MARK RACKAY

SPECIAL TO THE MONTROSE DAILY PRESS

If a pandemic were to hit the Montrose area, would emergency officials be prepared to handle the situation?

The possibility took a step closer to reality when an Emergency Preparedness and Response Exercise was held in January.

Emergency officials from the counties of Montrose, Mesa, Delta, Gunnison, Hinsdale and Ouray, took part. Participants included Law Enforcement, Montrose Memorial Hospital, Fire, EMS, Sheriff's Posse and Emergency Management for each county.

By their nature, a pandemic begins with one victim and can quickly swell to hundreds of victims.

Could it happen here?

There is possibility of a pandemic striking Montrose rises when considering Montrose airport services nine international airports. If there is an outbreak in another part of the world, there is a possibility it could reach the Western Slope.

If a pandemic were to infect 50 percent or more of the population, it

would put a strain on resources and critical services. Eventually staff in the hospital, clinics, police and fire services would be out sick.

Businesses and schools would close because there wouldn't be staff to run them. Also those staff members would need to be able to provide for their families.

A shutdown in other parts of the country could cause an interruption in the supply chain, leaving the area without incoming food, fuel and medical supplies and just about everything else that is shipped here.

It may not be a pandemic that cripples Montrose. In the center of the country lies the New Madrid Fault. This fault is 20 times larger than California's famed San Andreas Fault.

The largest earthquake in U.S. history occurred in the New Madrid Seismic Zone in 1812. The area is long overdue

for a quake and a major one would have far-reaching consequences.

Much of the Montrose supply infrastructure crosses the New Madrid Fault, including railroad lines and interstate highways. The area could have to go many days without food and other necessary supplies.

FEMA and many other agencies recommend everyone prepare a 72-hour kit containing food and supplies for a general emergency to include evacuations.

Prepare for the long haul

Don Angell, Emergency Manager for Montrose County believes that a 30-day kit makes more sense.

"Rural America is far better prepared than Metro America," said Angell. "We have the ability here to withstand several days with what we have on hand

See SURVIVE page 3

Rock takes out power in San Miguel County

By KATHARHYN HEIDELBERG

DAILY PRESS SENIOR WRITER

More than 4,300 power customers were plunged into darkness Saturday, when a rock the size of a refrigerator tumbled from 800 feet above and smashed into a transmission line.

Collaboration between multiple agencies and round-the-clock work by line workers saw the power restored in San Miguel County locations about 22 hours later.

The rock knocked out a Tri-State Generation and Transmission Association line in the Ilium Valley at Church Camp Road (San Miguel County Road 63L and Sunshine Mesa Road); the resulting outage affected parts of Mountain Village, Telluride and the valley.

"We got there as quick as we could," said Alex Shelley, spokesman for San Miguel Power Association, which delivers power generated by Tri-State to San Miguel County.

"It was the kind of project that was going to need to be a collaboration between SMPA and Tri-State. It was hard to access the site and so, crews spent a good portion of the night just plowing and getting equipment to that remote location," Shelley said.

San Miguel County Sheriff's Office deputies also

See ROCK page 4



An avalanche caused a slide that blocked Highway 550 Saturday. A debris pile about 12 to 15 feet deep and up to 350 feet wide was reported. The Colorado Department of Transportation responded, clearing the highway that connects Silverton and Ouray. (Janet Dean/Contributed photo)

Avalanche closes Red Mountain Pass

Two backcountry skiers in the northern San Juan Mountains were caught and carried in an avalanche on Saturday, which buried U.S. Highway 550 north of Silverton on Red Mountain Pass, resulting in the road's closure for most of the day.

According to the Colorado Avalanche Information Center, around 11:30 a.m. a group of five skiers were coming down the Eagle avalanche path above Highway 550 when the skiers triggered a slide.

Two of the skiers were caught and carried in the avalanche at an elevation of about 12,200 feet. No fatalities occurred, but the two skiers did suffer injuries.

The slide spilled out into Highway 550, causing a debris pile about 12 to 15 feet deep and up to 350 feet wide, the CAIC reported. The Colorado Department of Transportation responded, clearing the highway that connects Silverton and Ouray.

Mike Cooperstein, an avalanche forecaster, told The Durango Herald more information would be available Monday after CAIC completes its investigation. But he said the skiers are lucky to be alive.

Cooperstein said the unseasonably warm weather this week is a big change for the snowpack this time of year, but isn't solely responsible for the slide.

"When temperatures rise very rapidly, it can make it more dangerous, but that's not a predictor of danger by any means," he said. "It's pretty complex out there."

Already this season, there have been 11 avalanche-related incidents, the CAIC reported, and four people have died.

(This report first appeared in the Durango Herald.)

INDEX CALENDAR A2
OBITUARIES A4

COMICS A5
HISTORY A10

SPORTS A11-12
CLASSIFIEDS A6-9



Published for the Uncompahgre Valley and Donald Jackson of Montrose





CODY'S SPECIAL FEATURE & BY CUSTOMER REQUEST

THROUGH SATURDAY, FEB. 27TH

LINGUINI WITH WHITE CLAM SAUCE

LET US DO THE COOKING
CALL US TO CATER YOUR EVENT OR MEETING!






SURVIVE

FROM PAGE 1

because we don't run to town or the store every day. Most folks here shop once every week or two and have a fair amount of supplies laid in already. A two-day blizzard is something we can handle here. Thirty-day supply for a pandemic type incident would be the minimum."

Most important is a supply of fresh drinking water. You can bucket water from an irrigation ditch or a stream to flush toilets. Each home should have some way of purifying water for drinking.

Clorox bleach is a good standby in an emergency. Sixteen drops of bleach to a gallon and let it stand for an hour.

There is a wide assortment of filtration systems available. Many advances in technology have been made in recent years, and the devices are more affordable than ever.

Residents can also shut off the intake line to the hot water heater. This will provide 30 to 50 gallons depending on the size of water. Barrels or jugs filled with stored drinking water should be rotated out periodically.

The next consideration is food. Nonperishables, such as freeze dried foods, can be purchased in sealed bulk containers that will last upwards of 25 years. Compliment this with a selection of canned fruits and vegetables.

Meals ready to eat - MREs - are handy but not really practical. They take up much space and do not have the storage life of freeze-dried foods.

Canned foods, fruits and vegetables all have a long shelf life. Meats, such as chicken, tuna and beef, have a somewhat shorter life. Be aware of the expiration dates printed on the cans and rotate your stock regularly.

Those of us with special medications should have at least a 30-day supply on hand. Contact your doctor to see if he can give you an extra prescription for emergency stock. These medications have an expiration date and should be rotated also.

Don't forget Fido

Members of your household with special requirements should be included in planning also. Children and folks with dietary restrictions should have ample supply of needed foods for the time-frame planned.

Another concern caring for pets. They will want to eat also, so a supply of food and important medications should be stockpiled for them. Keep extra 40-pound bag of food and rotate it out monthly.

It is a good idea to keep some cash set aside for this type of emergency. In such an event, your debit and credit cards may be useless. Cash is always accepted by just about everyone.

If you decide to purchase a generator as a power source, consider the amount of fuel needed. Generators only need to run an hour or so every 12 hours to keep the freezer cold as long as you don't open the door. Things like the TV and video games will have to wait until power is restored.

You will want some way to cook your food. A propane stove or grill with several bottles of propane will work well. Camp stoves work also as long as you have enough fuel. With a wood stove, a woodpile is needed.

In the winter months, some consideration should be given as to how to warm your home. Wood stoves and fireplaces are the best options. Folks who use propane have the option of several space heaters. There are many options out there, and now is the time to think about them.

There's a process

Laying in supplies at home involves changing your mindset. You cannot just go out and buy lots of supplies, pile them up and wait until they are needed. Maintaining your stockpile is most important and rotating items to keep unexpired product is necessary.

For example, you could start with four cases of water. Then use one of those cases through your normal living, and simply replace it. The same thinking works with storing gasoline for generators. Once a week, dump one



These are a few examples of food products individuals should stock in their homes for emergency purposes. (Submitted photo)

of the cans into the car and refill it at the station.

Spend several hundred dollars all at once or budget the items needed. It's a good plan to pick up several items each week at the store for the stockpile.

The time to prepare for this is now, not when an incident begins unfolding. Those who react too late will find nothing but empty shelves at the grocery store.

There is a great deal of information

available regarding this topic online. Search www.readycolorado.com for information. Information and recommended supplies are also available Montrose's Emergency Management website at www.co.montrose.co.us/85/emergency management.

Mark Rackay is a freelance writer who serves as a Director for the Montrose County Sheriff's Posse. For information about the Posse call 970-252-4033 (leave a message) or email info@mcspi.org.

AIMS

FROM PAGE 1

Act, which Beinstein said increases bureaucracy.

Further, it is his stance that the Constitution does not give Congress the power to regulate education; Beinstein said this should be done at the state and local levels, though he does not favor an immediate end to the U.S. Department of Education.

Instead, he visualizes steps for a "wind-down" that, over a five- to 10-year period, would return those powers to the states.

"Education is one of the most important, if not the most important issue, but those powers should not be coming from the federal government," Beinstein said.

There should still be analyses of what does and does not work in education, he said. "I just think those movements, that accountability, should abide and the state and local level."

Beinstein "zeroed in" on Constitutional studies as a history major. He said the 10th Amendment makes clear the federal role: powers not designated to the U.S. government are reserved to the states, or to the people.

"I, along with a lot of other conservatives, take the 10th Amendment seriously," Beinstein said.

Beinstein pledged faithfulness to the Constitution and the founders' original intent.

The Constitution also makes clear the president's authority to nominate Supreme Court justices, he said, when asked about the death Saturday of Justice Antonin Scalia. Republican Senate leaders and presidential candidates have said that no nomination should be made until a new president is sworn in.

The president has the constitutional authority to make the nomination, Beinstein said, but certain possible nominees would be "nonstarters"

and he hopes the president would select someone with constitutional faithfulness.

Domestic issues, such as income inequality and health care, should be tackled, but not necessarily at the federal level, he indicated.

"I'm one of these Republicans who think we're supposed to help people. It's just supposed to happen at a state and local level," he said. "My goal is to return power back to the states and to individuals so they can rise up and help the less fortunate."

On the international scene, Beinstein aims to "annihilate" terrorism by cutting off its funding streams.

Saudi Arabia stands among the worst offenders, he said. The kingdom should be added to the State Sponsors of Terrorism List; targeted sanctions must be enacted to reduce commercial ties between it and the United States, and the assets of any Saudi with links to terrorism should be frozen.

"I think our relationship with Saudi Arabia has to be completely changed," Beinstein said.

In that and other issues, Beinstein sees common ground with Democrats. There are Democrats who want to audit the Federal Reserve; oppose No Child Left Behind as being too testing-centric, and who think provisions of the Bush-era Patriot Act are unconstitutional, he said. While there are fundamental philosophical differences on a number of fronts there are also areas in which Beinstein is able to see commonality.

"There are a lot of issues where the heart of the Republican Party and the heart of the Democratic Party think alike," he said.

Beinstein needs support from at least 30 percent of delegates at the state convention April 8. If successful, he will compete with Tipton at primary in June.

"This election, there's a hunger for something different," he said.

OPEN ENROLLMENT

Our Passion for children comes out in our teaching.

We give children the tools to be successful. Literacy & Learning through:

- ▶ Games
- ▶ Practice
- ▶ Training
- ▶ Art, music, science & physical outdoor learning
- ▶ Problem solving skills
- ▶ Small teacher to child ratios
- ▶ Pre-School Curriculum

Everyday, Every hour, Every Minute is a learning opportunity for young minds.

Tender Hearts Child Care/Preschool
924 Spring Creek Road, Unii B • Montrose, CO 81403
970-615-7227 • tenderheartsmontrose@gmail.com

CALLING ALL COWBOYS! - 39.50 ACRES • \$325,000
Montrose - Last home on private hilltop w/39.50 acres adjoining 3 sides w/ BLM. Nice Ranch & currently used for Horses & Llama. 3593 Sq Ft w/ 2129 Sq Ft Unfinished Basement. Can be used as 2 Family Home if Desired. 30 x 80 Utility Bldg/Barn w/ Water & Electric. Fenced Pasture Areas & 8 Fruit Trees. Very Unique Property South of Town. Water = 5 Shares. MLS # 696715.

"GET" what you pay for.....
You Want Maximum Exposure for your Listing!
Pick Up Our Advertising List & Gift that's Waiting for You!
(Tiered commission rates available - You choose your rate from our 3 plans)
*****PRESTIGE SELLS!!!!*****

Karen Maxner
Broker/Owner/Realtor
Cell # (970) 596-1286

PRESTIGE
REAL ESTATE AND PROPERTY MANAGEMENT
737 South Townsend Avenue

Genna Bradley
Personal Assistant
Office # (970) 252-0090

Tell us about your First Car!

What did the car mean to you?
What is your favorite memory of your car?
Did you buy it yourself?
Did you have to rebuild it?
If you have a photo please submit it with your story.

Deadline to enter is Sunday, February 21st
Go to Montrosepress.com and click on the "My First Car Contest" button!
All email addresses will be submitted into a drawing for a \$100 City Market Gift Card!
Every entry will receive a certificate for a free alignment check from Turner Automotive!

TURNER AUTOMOTIVE

TURNER TRUE PRICE

MONTROSE COUNTY COLORADO

Board of County Commissioners Meeting
Tuesday, Feb. 16th at 9:00 am
161 South Townsend Avenue
Call 970-249-7755 for more info!
Stream Live and On Demand at www.montrosecounty.net